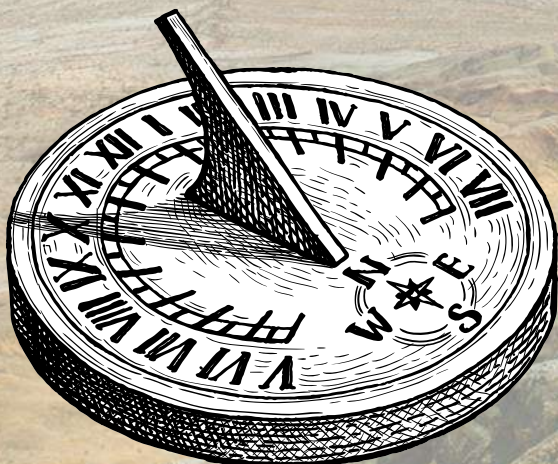
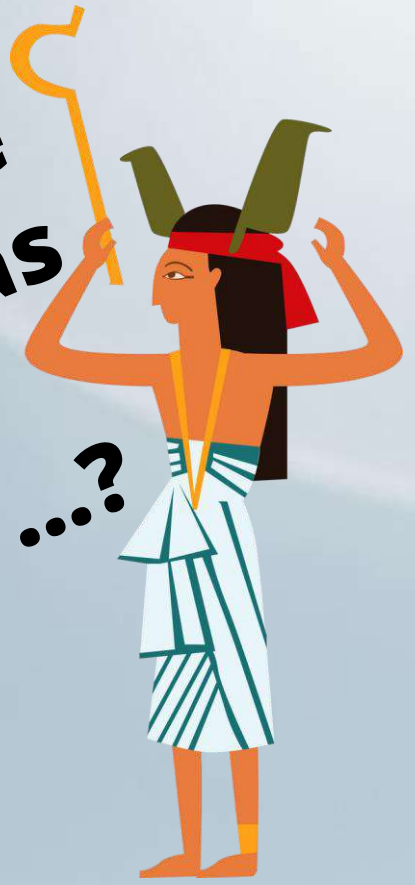


**yolanda hess**  
***presents***





Can you believe that the  
water that you drink has  
been on Earth for  
**THOUSANDS** of years ...?



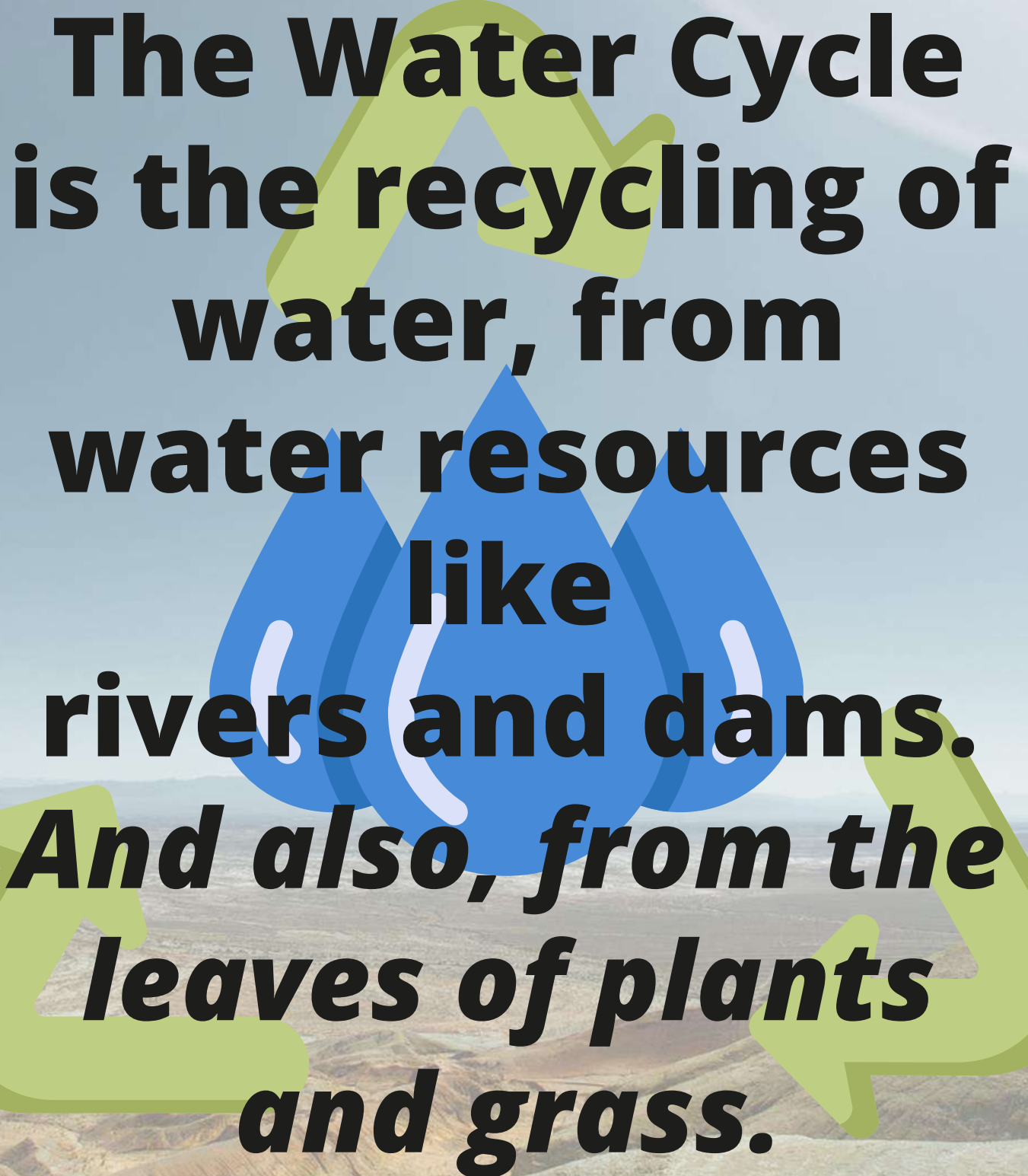
**How is this possible?  
(you might think)**



**The Water Cycle will  
provide us with all the  
answers**



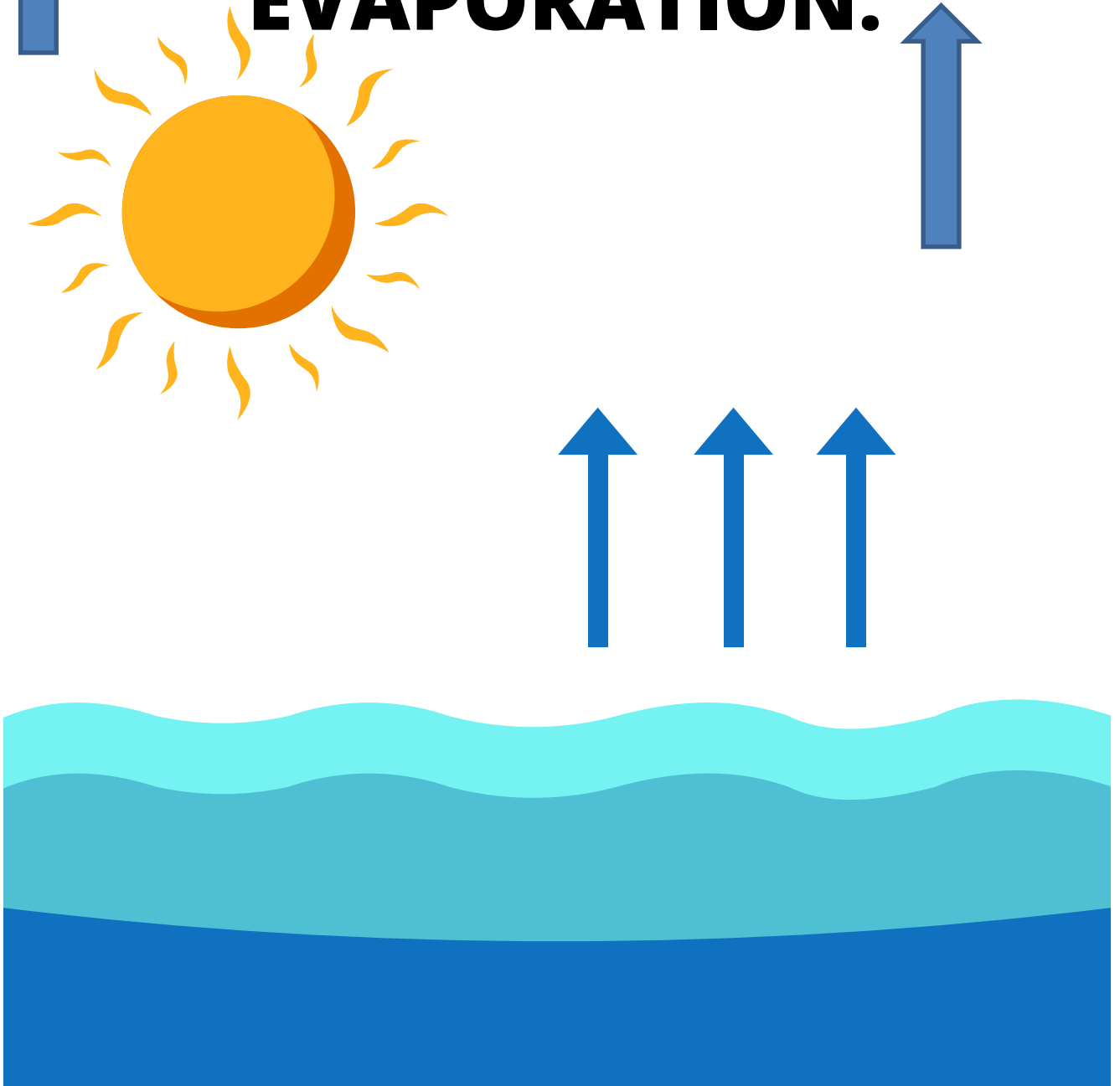
***let's read further...***

The image features a background of a vast, arid landscape with rolling hills and a clear sky. Overlaid on this is a large, stylized water cycle diagram. The diagram consists of a central blue water droplet with a white outline, surrounded by a green recycling symbol (three arrows forming a triangle). The text is centered over the diagram and reads: 

**The Water Cycle  
is the recycling of  
water, from  
water resources  
like  
rivers and dams.  
*And also, from the  
leaves of plants  
and grass.***

**When the sun heats up the water on earth, the water changes to gas called water vapour. Water vapour rises up into the atmosphere.**

**This process is called EVAPORATION.**



**The higher you go up in the atmosphere, the colder it gets. When the water droplets or vapour move up in the atmosphere, the cool air changes it to form clouds.**

**This process is called  
CONDENSATION**



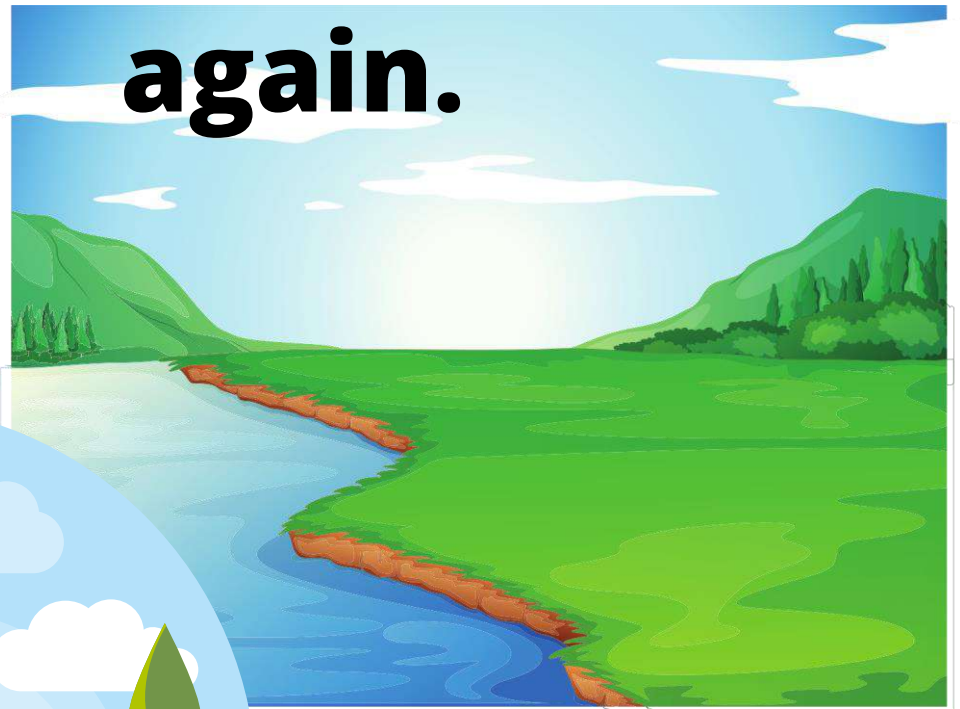
**As the clouds get heavier with water droplets, it pours down to earth in the form of rain, snow, hail, and fog. This process is called**

**PRECIPITATION**



**The rain, hail, and snow flow back to the dams and rivers so that the process can start**

**again.**



**All these magical  
processes make up the  
WATER CYCLE because  
water is never lost, it is  
recycled every single  
day on earth**



**Let's test your  
knowledge on some of  
the magical processes  
in the water cycle**



**Which process is shown by wet clothes drying on a washing line? This process is called EVAPORATION or CONDENSATION?**

**YOUR ANSWER IS: \_\_\_\_\_**



Which process is shown  
by car windows fogging up?

This process is called

**EVAPORATION** or  
**CONDENSATION?**

**YOUR ANSWER IS:** \_\_\_\_\_

